

# ***Bloom***

## TOUR DE BLOOM STAGE RACE TECHNICAL GUIDE

MAY 3-5, 2019



PRESENTED BY WENATCHEE VALLEY BREWING CO.

Welcome riders!

Wenatchee Valley Velo Club wants to extend a huge welcome to the 2019 Tour de Bloom Stage Race! We hope you enjoy the events and get a chance to take in other attractions and sights — including the valley's famous Apple Blossom Festival and Leavenworth's Bavarian Village.

Your participation benefits our kids' riding safety program, *Lids for Kids*, putting 750 bike helmets on children, and also signage for a bike route from Leavenworth to Wenatchee.

For 2019, the Stage Race will once again include a road race in the Plain/Lake Wenatchee area, a Merckx-style Time Trial, the Downtown Wenatchee Twilight Criterium, and a Waterville Road Race. If we can be of any help, please don't hesitate to contact us.

Best regards,

This is the inaugural year of the Tour of Washington! Three stage races; One champion!

Ace Bollinger  
*Race Director*

## GENERAL INFORMATION

The Tour de Bloom Stage Race, presented by Wenatchee Valley Brewing Co., is a USAC-sanctioned, three-day, four-stage event held in the Wenatchee Valley and adjoining Douglas County. Categories eligible to participate are Men 1/2; Men 3; Men Masters 40+ 1-4; Women 1/2/3; Men 4/5; Women 4/5, Women 50+ Open.

The four races include the Arlberg Sports Plain Road Race, which will cover some of the finest and most scenic cycling roads available in Chelan County; the Malaga Time Trial; the Rookard Pools Downtown Wenatchee Twilight Criterium, featuring a unique cobbled section; and the Builders Choice Waterville Road Race.

Please like us on [Facebook](#) – as race updates and information will be posted there!

## RACE COMMITTEE

Race director: Ace Bollinger

[tdbace@gmail.com](mailto:tdbace@gmail.com)

(509) 679-5003

Sponsoring team: [Wenatchee Valley Velo](#),

## RACE HEADQUARTERS

*Arlberg Sports*

Grand Central Building

25 N. Wenatchee Ave.

Wenatchee, WA 98801

## RACE HOTEL

*Holiday Inn Express*

1921 N. Wenatchee Ave.

Wenatchee, WA 98801

[Online Reservation with Race Discount](#)

## RACE HOSTEL

*Cross Sport Performance*

501 S. Wenatchee Ave.

Wenatchee, WA 98801

Please e-mail [ace@tdbace@gmail.com](mailto:ace@tdbace@gmail.com) for more information about reserving space at the race hostel.

## RESTAURANTS

The Wenatchee Valley features dozens of restaurants and cafes. Our featured restaurants for Tour de Bloom are:

### **WENATCHEE VALLEY BREWING CO.**

Brew Pub at Pybus Market

7 N. Worthen St.

Wenatchee, WA 98801

(509) 888-8088

<http://wenatcheevalleybrewingco.com>

### **GARLINI'S NAPOLETANA**

212 Fifth St.

Wenatchee, WA 98801

(509) 884-1707

<http://garlinisrestaurant.com/>

### **WOK-ABOUT GRILL (WENATCHEE)**

110 N. Wenatchee Ave.

Wenatchee, WA 98801

(509) 662-1154

<http://www.wokaboutgrill.com/>

### **MELA COFFEE ROASTING CO.**

17 N. Wenatchee Ave.

Wenatchee, WA 98801

(509) 888-0374

<https://melacoffee.com/pages/cafe-mela>

### **WENATCHEE VALLEY BREWING CO.**

Brewery

108 E. Island View St.

Wenatchee, WA 98801

(509) 881-4529

<http://wenatcheevalleybrewingco.com>

### **MCGLINN'S PUBLIC HOUSE**

111 Orondo Ave.

Wenatchee, WA 98801

(509) 663-9073

<http://www.mcglinns.com>

### **WOK-ABOUT GRILL (LEAVENWORTH)**

920 Front St.

Leavenworth, WA 98826

(509) 548-9652

<http://www.wokaboutgrill.com/>

*Please frequent these restaurants! They support our race weekend!*

## APPLE BLOSSOM FESTIVAL

2019 marks the 100<sup>th</sup> year of the Apple Blossom Festival in Wenatchee! Since 1919 the annual celebration has evolved from a single day of speeches, baseball, and Maypoles to a two-week event that includes a carnival, golf tournament, food fair, a youth parade, a Grand Parade, entertainment throughout town, and of course - the best weekend of bike racing in the Pacific Northwest.

Full schedules of all festival events can be found at the [festival website](#) or using the festival app.

## WEATHER

May is typically sunny and warm in the Wenatchee Valley – but you should prepare for cool mornings and evenings and considerable variation in weather between race stages. The weather during the Plain Road Race is likely to be quite a bit different than what you encounter in Waterville on Sunday – so come prepared for any contingency.

## ENTRY FEES

<b>CATEGORY</b>	<b>ONLINE Until 3/22/19</b>	<b>ONLINE 4/1/18 - 4/29/19</b>	<b>ONLINE 4/30/18 -5/2/19</b>	<b>ON SITE Cash only</b>
<b>Men 1/2</b>	\$160*	\$185	\$200	\$250
<b>Men 3</b>	\$160*	\$185	\$200	\$250
<b>Men 4/5</b>	\$160*	\$185	\$200	\$250
<b>Men 1/2/3/4 40+</b>	\$160*	\$185	\$200	\$250
<b>Women 1/2</b>	\$160*	\$185	\$200	\$250
<b>Women 3</b>	\$160*	\$185	\$200	\$250
<b>Women 4/5</b>	\$135*	\$160	\$175	\$200
<b>Women 50+ 1/2/3/4</b>	\$160	\$185	\$200	\$250

\*Receive \$10 off your pre-registration when registering for the Tour of Washington:

## [Tour of Washington Online Registration](#)

## RIDER PACKET PICKUP AND CHECK-IN

Rider's licenses will be checked prior to picking up race packets, bib numbers, and other info. Everyone is required to check in at packet pickup and sign the USA Cycling Competitive Release Form. All international riders with a UCI license from another National Federation will be permitted to race. Your registration acknowledges that you have read this tech guide. Please take a screen shot of your license as cell service may not be available.

---

### TOUR DE BLOOM PACKET PICKUP

Thursday, May 2, 2019

3 p.m. to 7 p.m.

Arlberg Sports Haus

1207 Front St.

Leavenworth, WA 98826

### TOUR DE BLOOM DAY-OF PACKET PICKUP

Friday, May 3, 2019

7 a.m. to 10 a.m.

Plain Cellars

18749 Alpine Acres Road

Plain, WA 98826

### PRE RACE PARTY

Friday, May 3, 2019

5:30 to 7 p.m.

Arlberg Sports

25 N. Wenatchee Ave.

Wenatchee, WA 98801

## TECHNICAL SUPPORT

See race notes for each race for tech and wheel support.

---

## NUMBER PLACEMENT

Race bib numbers will be provided to Tour de Bloom riders. One number will be placed on the left-hand side of the rider and one on the right-hand side.

Riders must ensure that their hair does not cover the bib number. Riders with race numbers that are cut, folded, mutilated, badly positioned, or covered shall be subject to penalties outlined in USAC Rule 8A1(j) and are further subject to the following time penalties:

- 1st offense: 3 seconds
- 2nd offense: 6 seconds
- 3rd offense: 9 seconds

---

## RESULTS

Results will be posted on location of the Plain Road Race, Downtown Twilight Criterium and Waterville Road Race. The Time Trial results will be posted at the start of the Criterium. Results also will be found at <http://gcracingllc.com>.

---

## PROTESTS

Any protests other than on the order of finish must be submitted in writing, accompanied by \$20, and filed with the Chief Referee. Protests concerning placing or order of finish must be submitted in writing to the Chief Judge. (see page 3) Protests must be presented within the following deadlines:  
Concerning placing: no later than the close of sign-in for the next stage;  
Concerning an incident during the race: no later than one hour after the finish;  
Concerning the final general classification: up to 15 minutes after the official announcement of posting the final GC results;

It is the riders' responsibility to check results and bring any issues up to the Chief Judge immediately.

---

## AWARDS FOR TOUR DE BLOOM STAGE RACE

Podium finishes will be recognized after each race. The schedule is as follows:

- **Arlberg Sports Plain Road Race** — 30 minutes after the Women 1/2/3 race finishes, at Plain Cellars, for all races that day.
- **Rookard Pools Twilight Criterium** — Immediately following races, at start/finish area on Wenatchee Avenue.
- **Builder's Choice Waterville Road Race** — A half-hour after each race finishes, at the Douglas County Fairgrounds in Waterville. Awards will be presented at the conclusion of the event on Sunday.

## PRIZE MONEY PAY-OUT OPTIONS

Prize money will be handed directly to participants. All prize money not picked up will be mailed within 10 business days. Racers must contact the race director to provide a mailing address. Merchandise will be distributed at podium presentation for each event. Merchandise cannot be shipped, racers must be present to claim merchandise prizes.

### GENERAL CLASSIFICATION PAYOUT:

Category	Place			Total Payout
	1	2	3	
Pro/1/2 Men	\$500.00	\$300.00	\$200.00	\$1,000.00
Cat 3 Men	\$250.00	\$150.00	\$100.00	\$500.00
Cat 4 Men	Merch	Merch	Merch	
Cat 5 Men	Merch	Merch	Merch	
Master 40+ Men	Merch	Merch	Merch	
Master 50+ Men	Merch	Merch	Merch	
Master 60+ Men	Merch	Merch	Merch	
Pro/1/2 Women	\$500.00	\$300.00	\$200.00	\$1,000.00
Cat 3 Women	\$250.00	\$150.00	\$100.00	\$500.00
Cat 4/5 Women	Merch	Merch	Merch	
Master 50+ Women	Merch	Merch	Merch	
Team GC	\$500.00	\$300.00	\$200.00	\$1,000.00

### TOUR OF WASHINGTON PAYOUT

Category	Places					Total Payout
	1	2	3	4	5	
Pro/1/2 Men	\$1,000.00	\$500.00	\$250.00	\$150.00	\$100.00	\$2,000.00
Cat 3 Men	\$500.00	\$250.00	\$125.00	\$75.00	\$50.00	\$1,000.00
Cat 4 Men	Merch	Merch	Merch	Merch	Merch	
Cat 5 Men	Merch	Merch	Merch	Merch	Merch	
Master 40+ Men	Merch	Merch	Merch	Merch	Merch	
Master 50+ Men	Merch	Merch	Merch	Merch	Merch	
Master 60+ Men	Merch	Merch	Merch	Merch	Merch	
Pro/1/2 Women	\$1,000.00	\$500.00	\$250.00	\$150.00	\$100.00	\$2,000.00
Cat 3 Women	\$500.00	\$250.00	\$125.00	\$75.00	\$50.00	\$1,000.00
Cat 4/5 Women	Merch	Merch	Merch	Merch	Merch	
Master 50+ Women	Merch	Merch	Merch	Merch	Merch	
Team GC	\$2,500.00	\$1,000.00	\$500.00			\$4,000.00

## TEAM COMPETITION

- In order to qualify for the competition teams will consist of at least 5 members and your team will need to notify the race director via email prior to 4/29/2019 to notify him intent to join the competition.
- There is a mandatory team captain meeting on Thursday May 2 at 7PM at the [Arlberg Sports Haus](#) (1207 Front Street, Leavenworth)
- The top three racers from each team will have their time added to the cumulative team time. The three teams with the lowest cumulative time at the end of stage four will be awarded according to the team competition payout schedule.
  - Tie breaker as follows:
    1. Total Number of Points
    2. Total number of 1<sup>st</sup> places
    3. Placing in last race
- The winner of the team overall Tour of Washington team competition will be determined by a point system which will be posted prior to the start of the Tour of Walla Walla.
  - Tie breaker as follows:
    1. Total time
    2. Total number of Team GC wins
    3. Team placing in the last event



## STAGE 1: ARLBERG SPORTS PLAIN ROAD RACE

*FRIDAY, MAY 3, 2019*

The Plain Road Race will start and finish near Plain Cellars in the bustling village of Plain. This year's edition will utilize roads north and west of Plain, including some along the north shore of scenic Lake Wenatchee. The finish line will be near the top of Beaver Hill. (For a course map, see below.)

### RIDER SIGN-IN

On the table at Plain Cellars, [18749 Alpine Acres Road](#). Posted by 8 a.m. Sign-in must be completed at least 30 minutes before your race.

### LOCATION (START/FINISH)

Plain Cellars, [18749 Alpine Acres Road, Plain, WA 98826](#)

### DRIVING DIRECTIONS

Plain is located off Highway 2 just a short distance from Coles Corner. From the Seattle area, Plain is reached by Highway 2. Off Highway 2, take Highway 207 to the Plain area. From the Spokane area, Tri-Cities and Oregon, you take the Quincy/Wenatchee exit off Interstate-90 and then take Highway 28 to Wenatchee, where you can then get on Highway 2 to Leavenworth. From Leavenworth, follow Chumstick Canyon Road to Plain. From British Columbia's Okanagan Valley, take Highway 97 south to Wenatchee and then get on Highway 2 to Leavenworth, then take a right turn onto the Chumstick Canyon Road to Plain.

### PARKING

There is ample off-street parking at Plain Cellars, [18749 Alpine Acres Road, Plain, 98826](#)

### START TIMES

Any changes to these times will be posted at Plain Cellars by 8 a.m., Friday, May 4.

<b>CATEGORY</b>	<b>START</b>	<b>LENGTH (miles)</b>	<b>LAPS</b>
<b>Men 4/5</b>	8:30 a.m.	50	2
<b>Women 1/2/3</b>	8:35 a.m.	50	2
<b>Women 4/5</b>	8:40 a.m.	50	2
<b>Men 1/2</b>	11:30 a.m.	74	3
<b>Men 3</b>	11:33 a.m.	74	3
<b>Men 40+ 1/2/3/4</b>	11:36 a.m.	74	3

NOTE: Podium to follow at Plain Cellars; podium will start 30 minutes after the Women 1/2/3 race finishes.

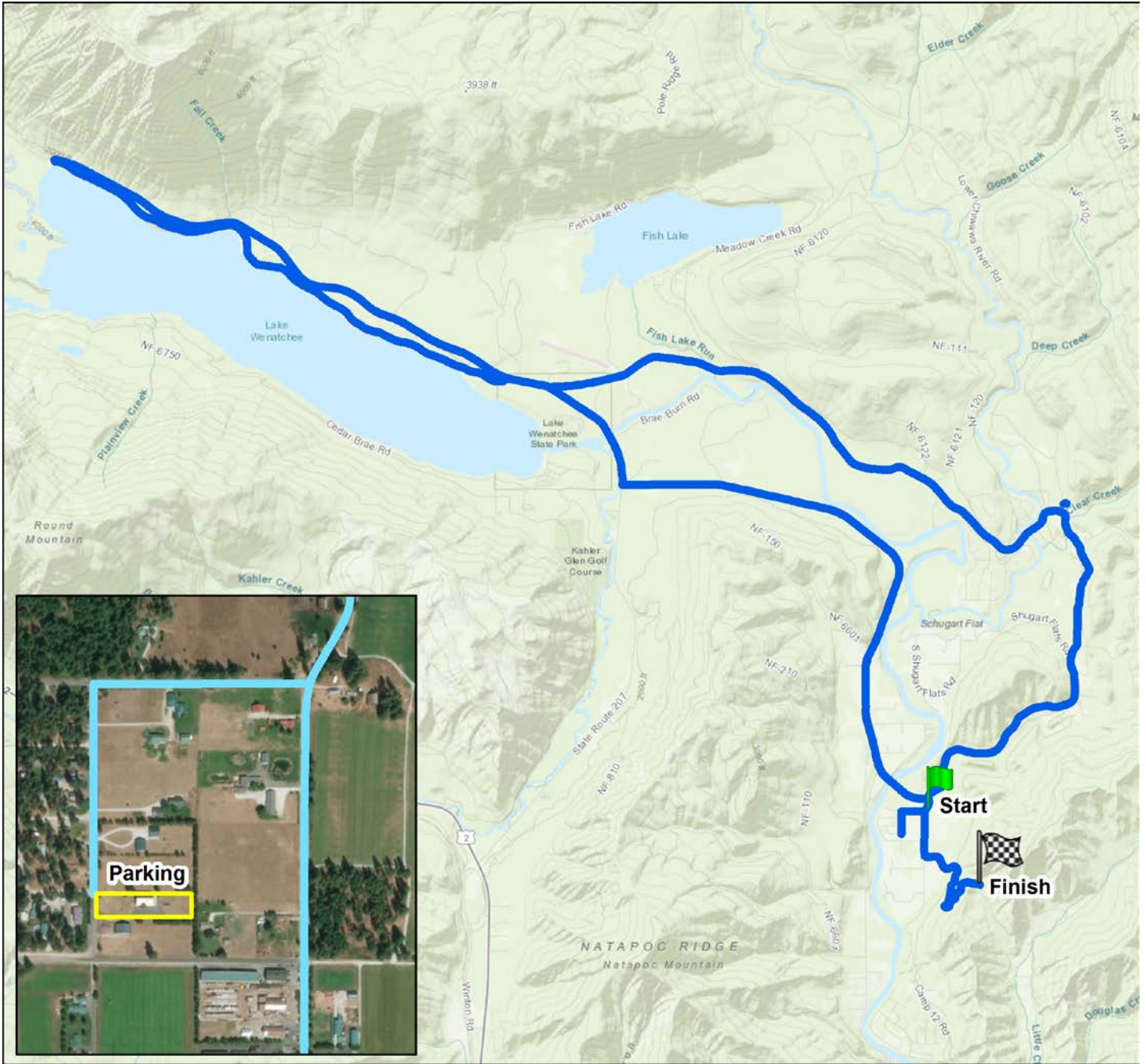
## RACE NOTES

- Centerline rule will be strictly enforced.
- Racers unable to finish the stage due to a crash may, at the chief referee's discretion, receive a prorated time and be allowed to continue to the next stage.
- Absolutely no vehicles will be allowed at the finish line. Folks will have to walk/ride to the finish area.
- Athlete parking in Plain will be at Plain Cellars.
- Racers are not allowed to park in front of any of the Plain businesses.
- If a racer is dropped from the peloton, they are to follow the rules of the road.
- Finish bonuses are: 1st — 15 seconds; 2nd — 10 seconds; 3rd — 5 seconds.
- A wheel car will be provided for each race. Wheels are wheels in, wheels out, unless changed to neutral wheels by race referee.
- First aid tent will be at Plain Cellars.
- Race doctor will be mobile on course.

# COURSE MAP

Check out our online map with detailed information and course notes here:

<https://arcg.is/14a1GD0>



## STAGE 2: TIME TRIAL

**SATURDAY MAY 4, 2019**

### START AND RIDER SIGN-IN

Table at start line at [Malaga-Alcoa Highway](#)  
Sign in: At start, 15 minutes prior to start time.

### DRIVING DIRECTIONS

To avoid heavy traffic congestion from the Apple Blossom Parade in downtown Wenatchee, riders should get on Highway 28 in East Wenatchee, cross the George Sellar Bridge, then take a left onto Mission Street. Continue south on Mission Street for a quarter mile, take a left onto Crawford Street. Go a block and take a right on Wenatchee Avenue. After a short distance, Wenatchee Avenue becomes the Malaga-Alcoa Highway. Continue about 9 miles to the Time Trial start area at the old Alcoa plant.

### PARKING

There is ample off-street parking at the [Alcoa plant](#). Use the upper parking lot.

### START TIMES

*Individual start times will be posted online and at Plain Cellars on Friday and at Arlberg Sports on Friday night.*

<b>CATEGORY</b>	<b>START</b>
<b>Women 4/5</b>	7 AM
<b>Men 4/5</b>	7:30 AM
<b>Men 40+ 1/2/3/4</b>	8:45 AM
<b>Men 3</b>	9:30 AM
<b>Women 1/2/3</b>	10:15 AM
<b>Men 1/2</b>	10:45 AM

### RACE NOTES

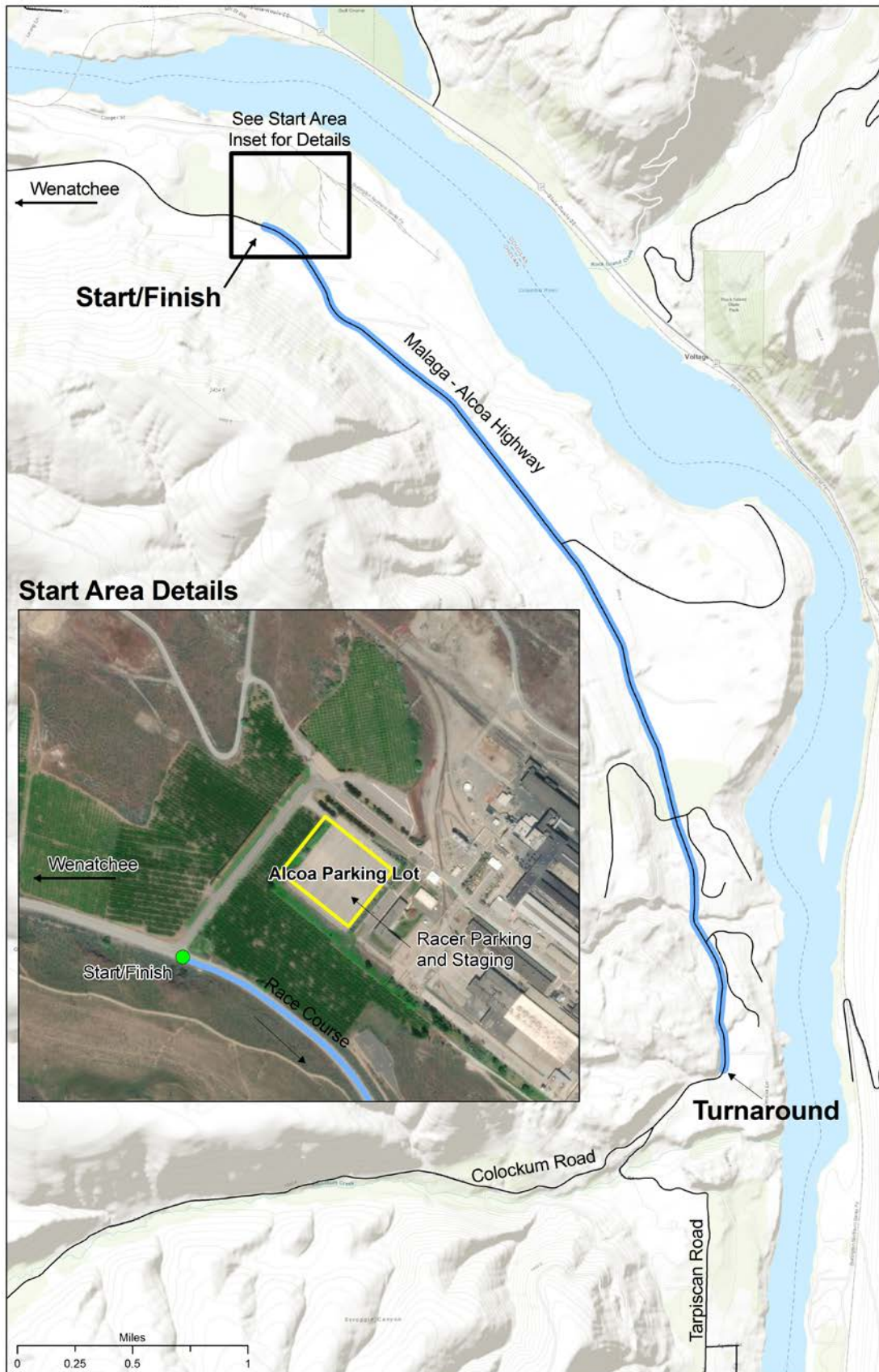
- This is an open road with normal traffic; the centerline rule will be strictly enforced.
- First aid is at the start line.
- As per [USAC rule 111\(h\)](#) this race will be conducted on mass-start bikes.
  - Drop bars only - No aero bars (extensions) will be allowed.
  - The bike frame and helmet you use in the TT needs to be the same bike/helmet that you use during the other stages.
  - No disc or tri-spoke wheels are allowed



# COURSE MAP

Check out our online map with detailed information and course notes here:

<https://arcg.is/feize>



## STAGE 3: ROOKARD POOLS THERAPYDOWNTOWN TWILIGHT CRITERIUM

**SATURDAY, MAY 4, 2019**

The Rookard Pools Downtown Criterium takes place in the heart of historic Wenatchee over a six-block loop, and right after the Apple Blossom Festival Grand Parade concludes. The start and finish is on Wenatchee Avenue, between Palouse and First streets. A large beer garden near the finish line attracts hundreds of spectators.

Team tents are encouraged on the outside of the course. The intersections of Wenatchee Avenue and First Street, Wenatchee Avenue and Palouse Street, and Wenatchee Avenue and Orondo Avenue are prime spots. Please contact [Ace](tel:509-679-5003) (509-679-5003) to reserve space for your team.

### START TIMES

CATEGORY	DURATION (minutes)	Start Time
<b>Women 4/5</b>	25	3:00
<b>Women 1/2/3</b>	45	3:40
<b>Men 4/5</b>	45	4:40
<b>Men 40+ 1/2/3/4</b>	45	5:40
<b>Community Race</b>	20	6:30
<b>Men 3</b>	50	7:00
<b>Men 1/2</b>	60	8:00

*Podiums ceremonies will be held after each race.*

### LOCATION (START, FINISH AND RIDER SIGN-IN)

The start/finish line will be located at the announcers table on Wenatchee Avenue. Riders need to sign in at least 15 minutes prior to their start time at the tables located behind the announcers table. Sign in closes 15 minutes prior to each race start.

### DRIVING DIRECTIONS

From race headquarters ([25 N. Wenatchee Ave. Wenatchee](#)): None. You are right there!

### PARKING

There is ample off-street parking at lots along Columbia Street, a block east of the criterium course.

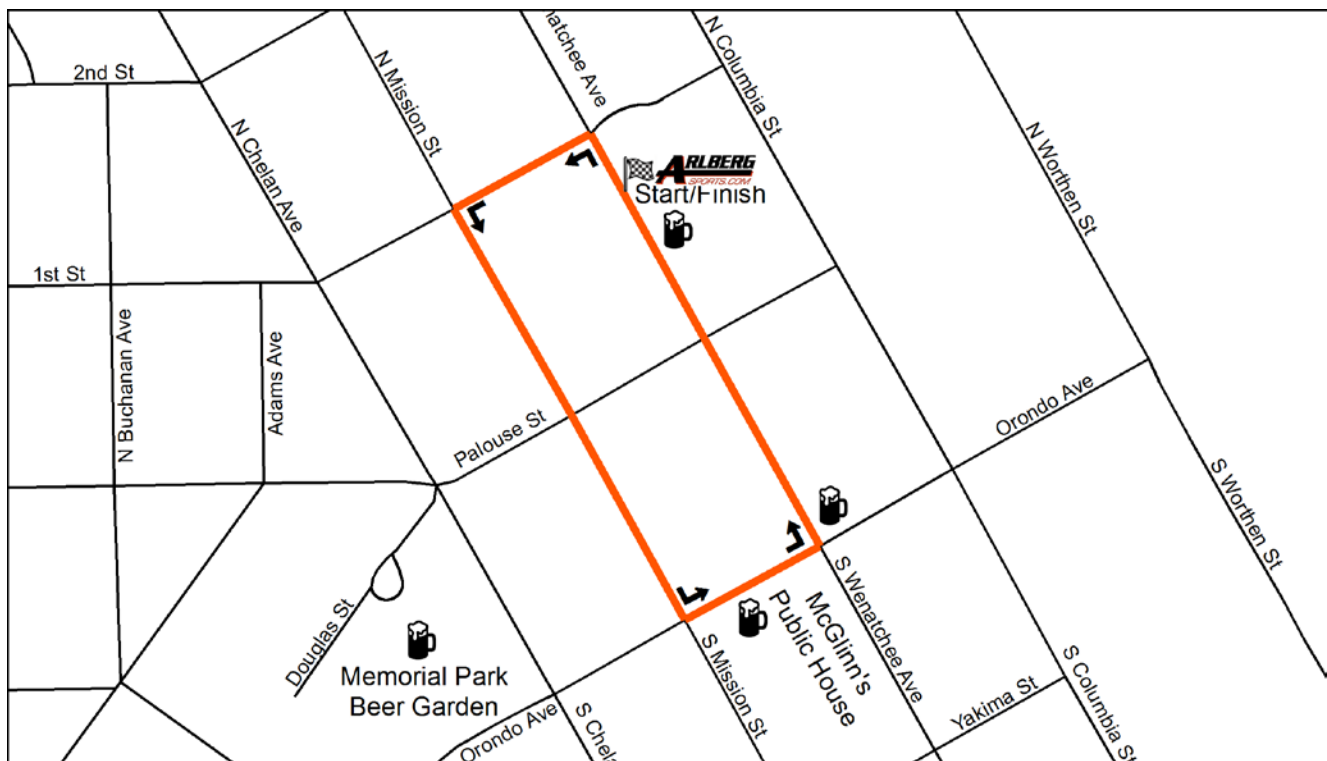
## RACE NOTES

- The Pit will be located on Wenatchee Avenue, south of the start-finish line.
- Wheel pit is neutral. Teams will be required to provide at least one set of wheels for the pit.
- First aid tent is at intersection of Wenatchee Avenue and Palouse Street.
- Riders can never ride backwards on the course to reach the pit or they will be disqualified from the Criterium.
- Lapped riders may be pulled as determined by the chief referee's discretion.
- Racers pulled from the race by the officials may receive a prorated time and be allowed to continue to the next stage. Racers who withdraw from the crit on their own will not be allowed to continue to the next stage.
- Primes in the race will be for cash, swag and time bonuses. The exact number of each will be determined at race time.
- Sprint and cash bonuses will be added at the discretion of the race director. Bonus structure will be announced at the start line.
- Team tents are encouraged on the outside of the course. The intersections of Wenatchee Avenue and First Street, Wenatchee Avenue and Palouse Street, and Wenatchee Avenue and Orondo Avenue are prime spots. Please contact Ace to reserve space for your team.

## COURSE MAP

Check out our online map with detailed information and course notes here:

<https://arcg.is/1Ljinf>



## STAGE 4: BUILDERS CHOICE WATERVILLE ROAD RACE

**SUNDAY MAY 5, 2019**

*It has broken riders before; it will again today.*

The Builders Choice Waterville Road Race incorporates roads in the classic Waterville wheat country. This course is flat with rollers, but don't be deceived into thinking it's an easy task. The wind just may play a role in the outcome. Please note that the roads used for this stage are open to traffic.

### LOCATION (START, FINISH AND RIDER SIGN-IN)

Douglas County Fairgrounds, [601 N. Monroe St., Waterville, WA](#)

Sign in: At start line, 15 minutes prior to the start of the race.

### PARKING

There is ample off-street parking across from the Douglas County Fairgrounds, [601 N. Monroe St., Waterville, 98858](#). *Overnight camping is allowed.* There will be no parking allowed within 200 yards before or after the finish line.

### START TIMES

CATEGORY	START	Estimated FINISH	MILES	LAPS
<b>Men 4/5</b>	9 a.m.	10:30 a.m.	34	1
<b>Women 1/2/3</b>	9:05 a.m.	10:40 a.m.	34	1
<b>Women 4/5</b>	9:10 a.m.	10:45 a.m.	34	1
<b>Men 1/2</b>	11 a.m.	1:35 p.m.	68	2
<b>Men 3</b>	11:05 a.m.	1:53 p.m.	68	2
<b>Men Masters 40+ 1-4</b>	11:10 a.m.	2 p.m.	68	2

NOTE: Podiums to be 30 minutes after first place crosses the line.

### RACE NOTES

- Please bring an extra set of wheels. Wheels are wheels in/out unless declared neutral by race official.
- Centerline rule will be strictly enforced.
- Staging for the road race will be on the road in front of the entrance to the fairgrounds.
- The feed zone is located approximately 4 miles into the course on a slight hill. The feed zone will only be open to racers on the second lap.
- Road will be open from 1 kilometer to finish.
- Sprint bonus at finish line. For two lap events, plus finish bonus. 1st — 15 seconds; 2nd — 10 seconds; 3rd — 5 seconds.
- Finish bonus for one lap. 1st — 15 seconds; 2nd — 10 seconds; 3rd — 5 seconds.
- Roll out for juniors is at finish. It is racer's responsibility to check in with chief judge two minutes after finish.

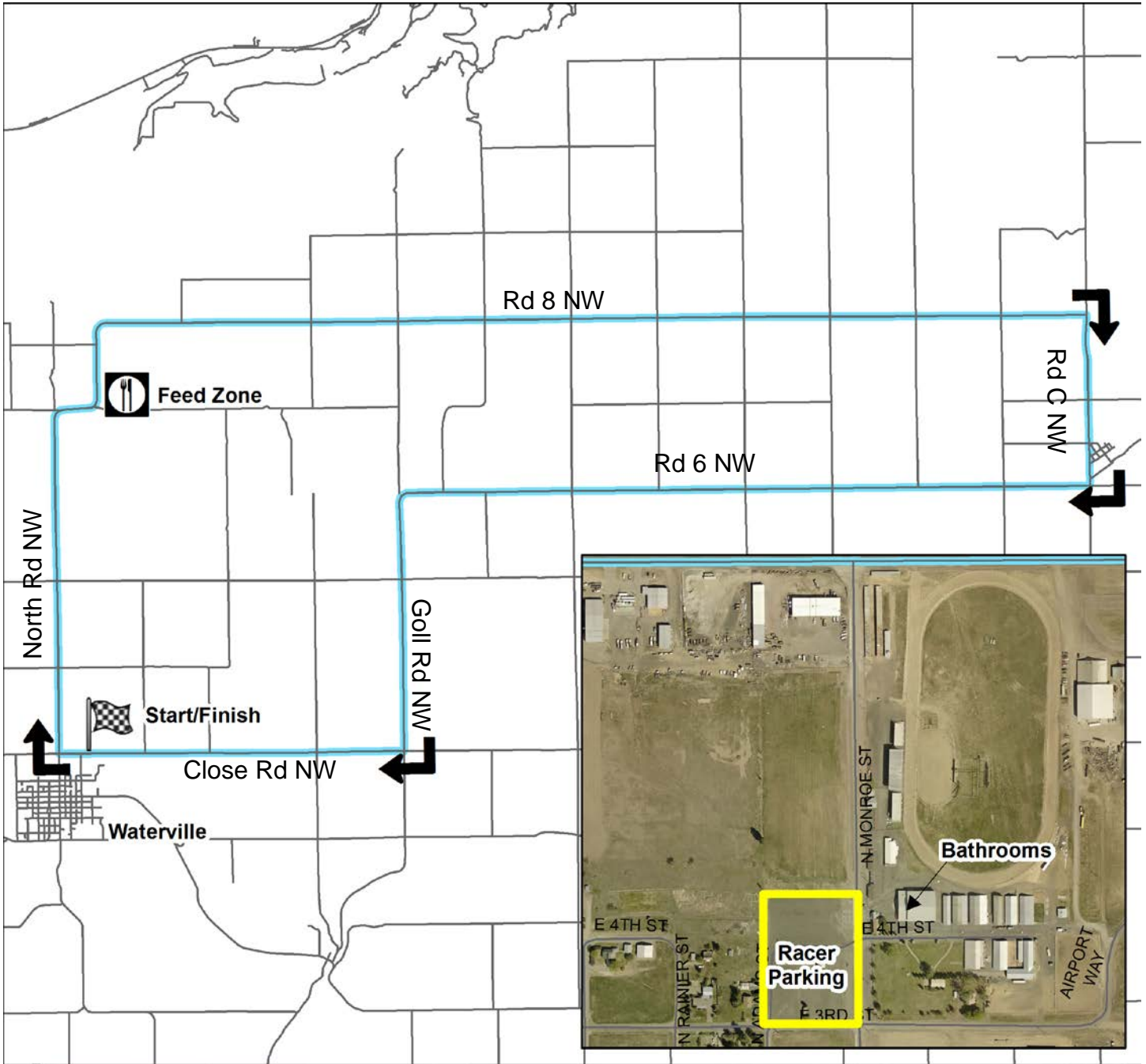
*NOTE: As a matter of safety, health and well-being of the riders, if the temperatures exceed 80 degrees and at the discretion of the Chief Referee or Race Director, riders may be able to get water hand-ups from the race caravan. Race day weather will dictate.*



COURSE MAP

Check out our online map with detailed information and course notes here:

<https://arcg.is/1Hnr05>



## DRIVING DIRECTIONS

From race headquarters (25 N. Wenatchee Ave. Wenatchee):

1. Get on Wenatchee Avenue and head north for 3 miles before getting on Highway 2/97 heading east. Continue for about two miles, crossing the Columbia River on the Odabashian Bridge.
2. At the intersection of Highway 28 (Sunset Highway), take a left and continue north on Highway 2/97. Drive about 11 miles before taking the Highway 2/Waterville exit. Continue for 9.5 miles until reaching the town of Waterville.
3. Drive into town and get on Central Avenue. From there, take the following streets to reach the Douglas County Fairgrounds:
  - a. Right on Locust Street,
  - b. left on to Chelan Avenue,
  - c. right on E. Third St.,
  - d. left onto Monroe Street. The address is 601 N. Monroe St.